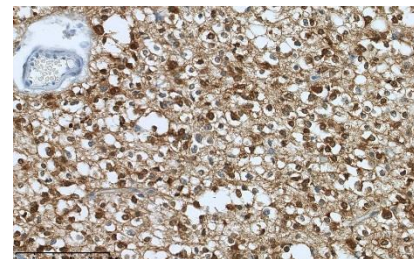
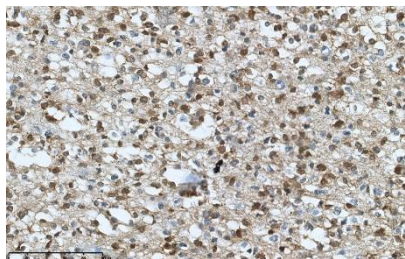
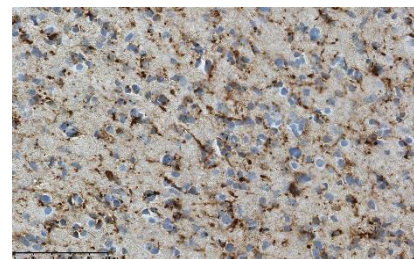
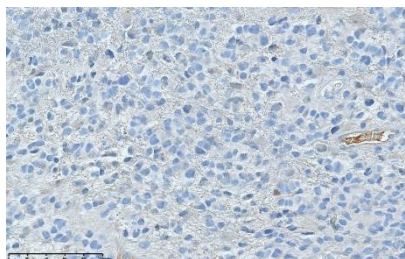


Tissue control



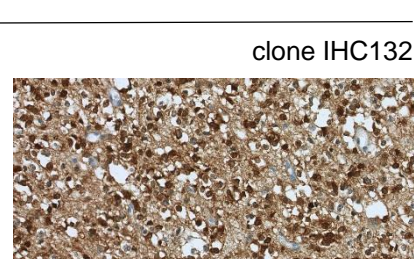
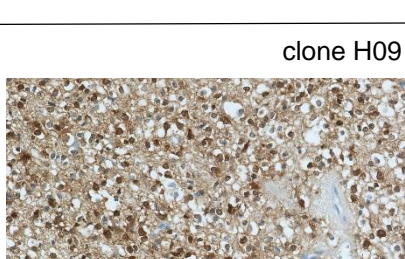
IDH1R132H positive



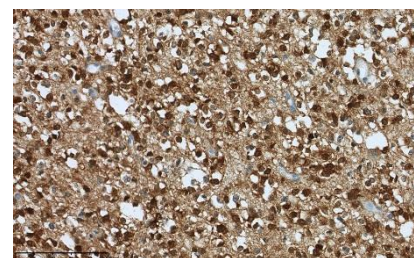
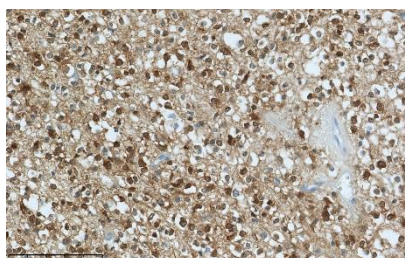
Dilution

**1:100**

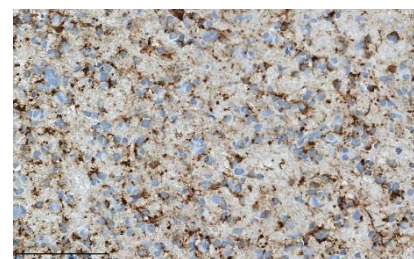
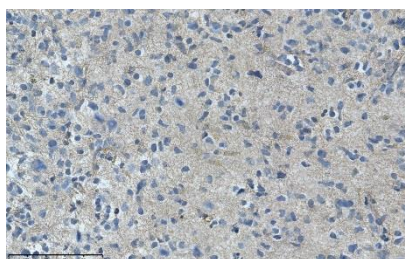
IDH1R132H negative



Tissue control



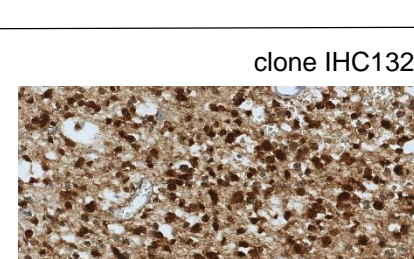
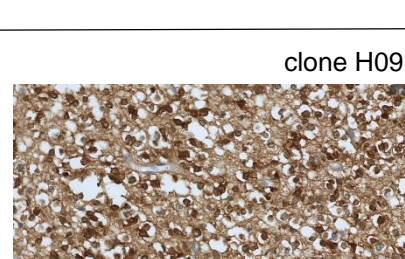
IDH1R132H positive



Dilution

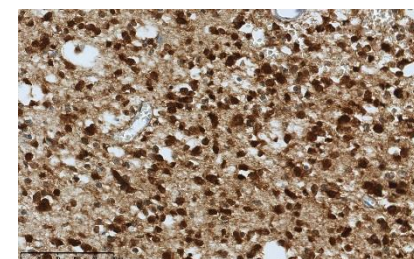
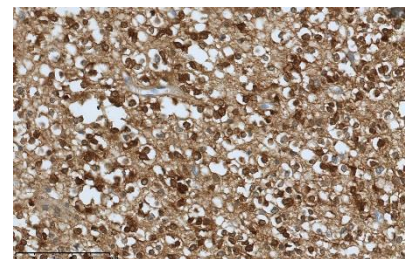
**1:50**

IDH1R132H negative

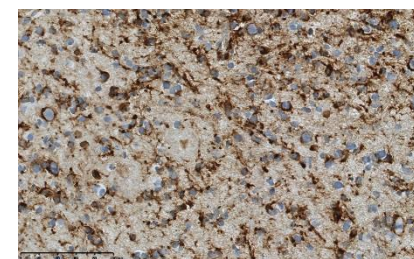
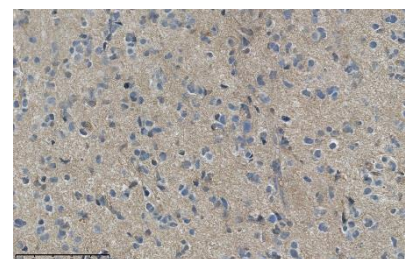


Dilution

Tissue control



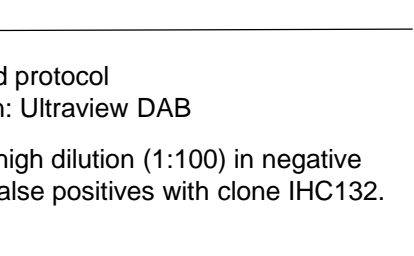
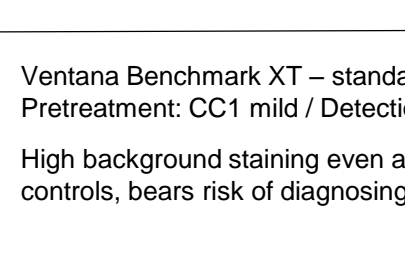
IDH1R132H positive



Dilution

**1:20**

IDH1R132H negative



Protocol

Ventana Benchmark XT – standard protocol  
Pretreatment: CC1 mild / Detection: Ultraview DAB

Results

High background staining even at high dilution (1:100) in negative controls, bears risk of diagnosing false positives with clone IHC132.